

Cert News

NICEIC Certification

Centre News & Information

Issue 11

Welcome to the eleventh edition of the news and information from NICEIC Certification.

Electronic Transfer and Storage of Candidate Paperwork for Approved Assessment Centres, using OneDrive

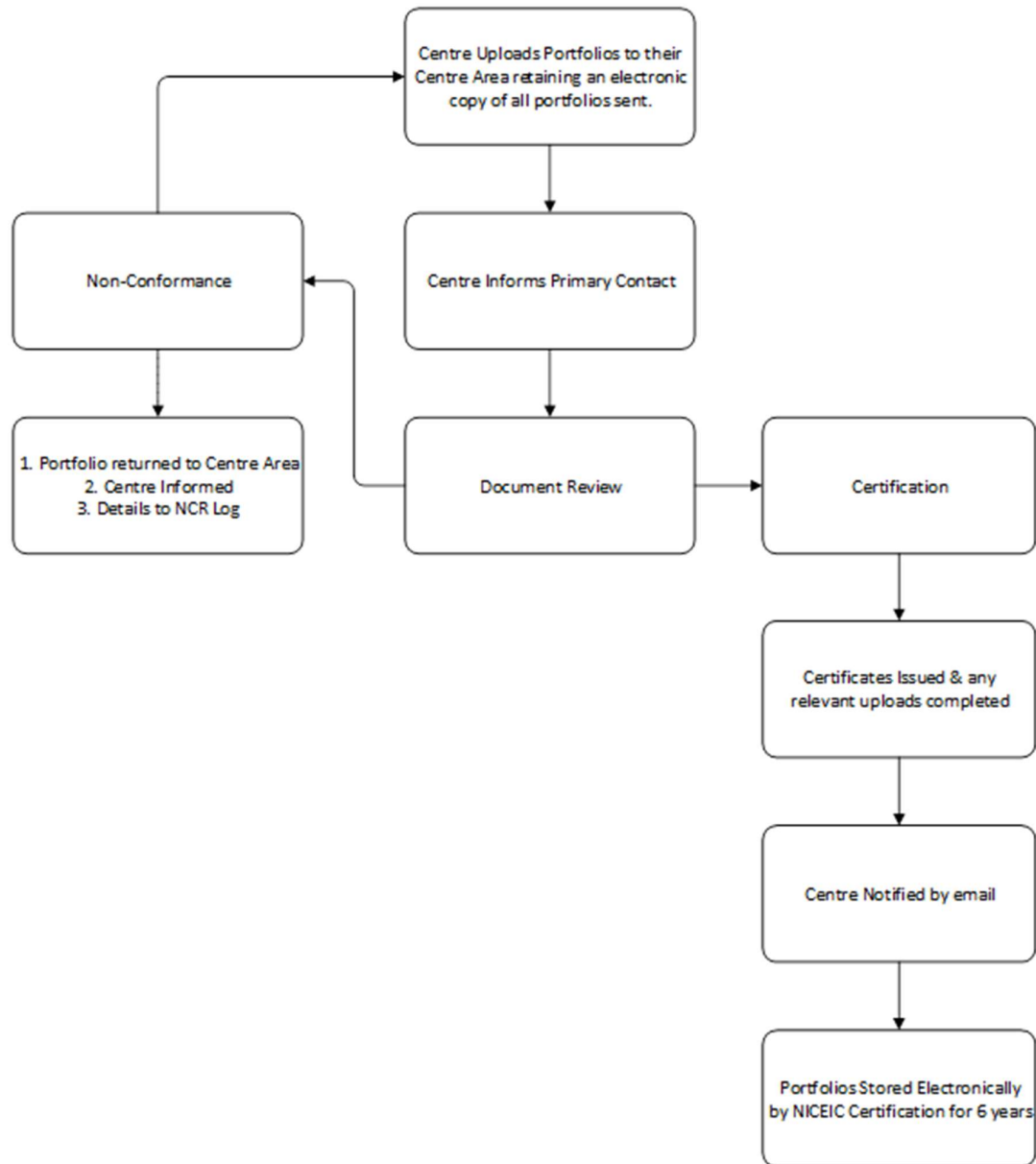
NICEIC Certification have successfully established their system for the Electronic Transfer and Storage of Candidate Paperwork which offers a fast and secure method for our approved centres to submit their portfolios for Document Review before Certification.

This system has now been trialled successfully and offers significant savings in both time and cost compared to the traditional method of sending portfolios by post or courier.

There are currently 11 x of our Approved Centres now using the Electronic Transfer and Storage of Candidate Paperwork.

Any Approved Centre who wants to use this facility in the future should contact their Primary Contact to arrange this.

A flowchart of the key steps of the process is shown below:



The Certification of Persons Management System Council (CPMSC).

The last CPMSC meeting was held via Teams on the 2nd December 2021. The CPMSC are independent of NICEIC Certification and its role is to overview the activities of NICEIC Certification to ensure the proper functioning and impartiality of the Certification of Persons and Management System activities.

The latest member of the CPMSC, representing Consumers is Virginia Graham OBE, Virginia is Chief Executive of Renewable Energy Assurance Ltd (REAL). Set up in 2006, REAL administers two consumer codes, four certification schemes and one ID registry, all operating in the renewable energy and circular economy sectors. The largest of these is the

CTSI-approved Renewable Energy Consumer Code (RECC), for installers of small-scale renewable energy systems.

Before setting up REAL, Virginia worked for the GB energy regulator Ofgem for six years as Director of Environmental, Consumer and Social Issues. She has previously been a Trustee of National Energy Action, Chair of Global Action Plan, Chair and Trustee of Eaga Charitable Trust and Chair of the Heat Trust Committee. She was appointed OBE in January 2020.

If you or your customers have any issues or queries that you would like to bring to the attention of the CPMSC then these can be sent directly to the Chairman of the CPMSC (currently Mr Richard Searle). The direct e-mail address is; CPMSC@Certsure.com

The next meeting of the CPMSC will be held on the 7th June 2022.

NICEIC Gas Publications update.

A period of relative calm is being experienced within the current gas publications since the last significant update introduced for:

- Domestic Gas Safety On Site Guide (PARTS 1 & 2) – November 2020, Version 9;
- Liquefied Petroleum Gas Safety On Site Guide – November 2020, Version 6 (see Note)
- Non-Domestic Gas Safety On Site Guide (PARTS 1 & 2) – February 2021, Version 10.

Note: A Corrigendum was introduced in March 2021 to clarify a technical issue within Chapter 13 'Boats'. The content of the Corrigendum has subsequently been included within a stock reprint of the Guide, also dated March 2021.

The Corrigendum can be freely accessed at: <https://www.shop.niceic.com/publications/gas-and-renewables/pniclpgsg20>

However, preparatory work is in progress for:

- Non-Domestic OSG; Chapter 13 'Laundry' covering changes to BS 8446, and
- LPG On Site Guide – reviewing the impact of recent updates to Liquid Gas UK's CoP 1 (parts 2-4), CoP 22 and CoP 32. In addition, it is understood that BS EN ISO 10239 (for boats) is currently under review at BSi, which may result in further changes.

Currently, no date has been set for the reprinting of these Guides, but this will be reviewed in the new year.

ACS Criteria Updates - 1st March 2022

All approved ACS assessment centres have been issued new 1st March 2022 amended assessment documentation (03/22) for implementation.

The changes for 2022 are mainly affecting the domestic core with the removal of criteria no longer deemed a requirement for a re-assessment candidate. This has led to a substantial reduction in the amount of questions in OB6, OB7 and CCN1 PAWS. There is also some minor re-assessment performance removal which includes calculating ventilation and commissioning CO detectors. Re-Assessment candidates will still have to identify inadequate ventilation and may require to calculate the vent size to identify the inadequacy, but there is no need to record the calculation.

Some of these criteria removals have been mirrored in the LPG, ESP and Non-Domestic cores. There is also a new core question related to external cladding on buildings with the relevance related to different requirements for England, Wales, Northern Ireland and Scotland.

In the LPG suite of assessments there has been a major review of External Pipework (CCLP1 EP), VESLP1 and VESLP2 in line with the new LGUK COP 22. Centres shall be aware that post review and redevelopment of this criteria the new LGUK COP 22 was again replaced with a corrected version. We have reviewed the changes and will be re-issuing the EP, VESLP1 and VESLP2 to reflect the new standard.

The read me first, contents and theory rationales all show specific changes in red text for centres to identify the differences from the last issue.

Centres are reminded to implement the changes for 1st March 2022 and destroy all previous versions.

IGEM/IG/1 Standards of Training

Our three Managed Learning Programmes are normally reviewed and re-issued each year in-line with new Matters of Gas Safety (MOGS) criteria changes. This year it has been decided to hold back as all three programmes are currently being reviewed by industry working groups with some major changes being introduced to standardise and add value to the content and methodology of delivery. There is an estimated timeline for each of the new look programmes being issued to centres which is dependent on the progress of the appropriate sector working group and the sign-off process by the appropriate bodies.

An estimated timeline for each programme re-issue is as follows:

1. Domestic MLP (DMLP): The DMLP will be reviewed and redeveloped to include more content on wet central heating design with other changes to include amended guided learning hours and how on-the-job evidence is sourced and recorded. It is expected this new programme

will be issued in Q4 of 2022. The working group have finalised this work and await the sign-off by the appropriate body.

2. Metering MLP (MMLP): This programme is currently still in redevelopment with changes to guided learning hours, methodology of gathering on-the-job evidence and the range of meter installations appropriate to the metering sector. It is estimated this programme will be ready for a Q1 re-issue in 2023.
3. Non-Domestic MLP (NDMLP): The NDMLP is in redevelopment by the sector working group as we speak with an estimated sign-off and re-issue around Q2 – Q3 of 2023. NICEIC Certification, however, have discussed the current programme and are aware of feedback received from specific customers and the desire to change the methodology for delivering and validating the content. For this reason, we have decided to re-commence redevelopment of the programme over the coming weeks with a target of issuing the changes to our centres by the summer of 2022.

You will appreciate that all timelines are dependant on working group progress and sign-off. We are also reluctant to issue an updated programme when a wider industry review is pending to avoid additional workload for our centres.

The main changes to MOGS this year would not have impacted on the content review of our MLP's, but we would advise centres delivering MLP's to be aware of the "Cladding for Buildings" supplement issued with the current suite of ACS criteria. We would advise that the training needs to deliver an awareness of the regional differences.

We would also like to ascertain your viewpoint on LPG MLP's. We have not had much interest from centres as to developing such a programme and as you will appreciate a product needs a return of investment. As valued customers and with this in mind, please let us know if you feel there is a market for such a product. We can then ascertain how we proceed.

Validation of Training (VOT) Criteria and Reports.

A revised "Validation of Training" (VOT) package (03/23) has been issued to all centres operating the ACS scheme. The use of this package is essential in supporting the requirements of Guidance Note 8 where applicant candidates are changing sector, extending scope and/or range of their activities.

NICEIC Approved Assessment Centre Quality Management System

The quality management system template provided by NICEIC Certification 03/21 should by now have been implemented and aiding navigation around the QMS, tailored specifically for your Centre.

NICEIC Package & Qualifications Up-date:

NICEIC Certification are currently in the final stages of developing a “Low Temperature Heating and Hot Water Package”. The Package will consist of a Training element, approximately a total of 5 x Training PowerPoint presentations - an Introduction (all about the award), System Information required, System Design (domestic hot water), System Design (heating) and Pipe Sizing, the current CIBSE guide will be Normative document referenced within the Package (total GLH = 16 hours). There will also be an Assessment, which will consist of a theory paper (42 questions) and a PAW Book (15 questions) total Assessment time 4 hours, giving a total Package time of 20 hrs.

This new Package will be trialled at a number of Approved Centres before being released. In the future, it is expected that the Low Temperature Heating and Hot Water Package will form part of the pre-requisite qualifications for future Renewable Packages, with a version of the Package also expected to become part of the IGEM/IG/1 Managed Learning Package requirements.

Group Competence Scheme (GCS) Update.

NICEIC Certification is still the only Certification Body Accredited to Certify the Group Competence Scheme (GCS).

If you would like more information on GCS please contact ian.crockett@niceic.com .

An Introduction to NICEIC Team members;

Andy Mason



Andy Mason

NICEIC Certification External Verifier

When did you join NICEIC?

I joined as an associate assessor at the Leicester assessment centre in September 2020, and then I joined the team full time on the 27th September 2021.

Who were your previous employers?

I previously worked for British Gas, firstly as a technical engineer, joining them in 2003, then I gained the position of Learning and development manager at the Leeds Academy in January 2011, during my time at Leeds Academy I was responsible for training and assessing, of apprentices and adult recruits, in all aspects of Gas, Water, and Electricity, tailored to the specific courses and schemes that they were enrolled on. I left British Gas Leeds Academy following its closure in June 2020.

What qualities do you bring to the roll?

I am hard working, dedicated, and, I have many skills and abilities across a wide range of engineering trades, I am also honest and approachable, and I am dedicated to the roles that I am undertaking, I am friendly and calm, and I am always looking to gain knowledge and understanding from my peers.

What skills have you developed during your career?

I have gained a vast number of skills in the Gas industry, and more recently I have gained my electrical qualifications, I have excellent communication skills, I am also qualified in assessing, and Internal quality assurance, and I am currently undertaking a External quality assurance course.

Tell us about your home life and any interests.

I try to spend my time with my family, and a few years ago, I converted a van into a campervan, and we love to go away for weekends in the countryside, for walks, and also the coastal areas to spend time on beaches and discovering new areas. I am also a great sports fan, and I have a fondness for live music and entertainment.